

Eng. Ramy El Zabet

Mobile (Cairo): 0100 621 9325



EUTRAC®

EUTRAC Stromschienen GmbH

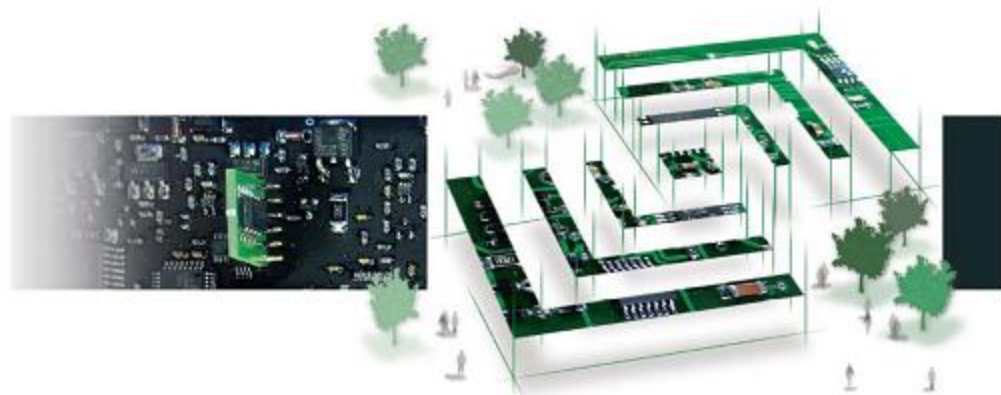
Tracks and adaptors



 **Intelligent
Lighting**

Light management & control





Intelligent Lighting



Intelligent Lighting – for individual projects



← public buildings | offices | conferences →



← exhibitions | museums | trade fairs →

← architecture | building facades | events →



← hotels | restaurants | shops →

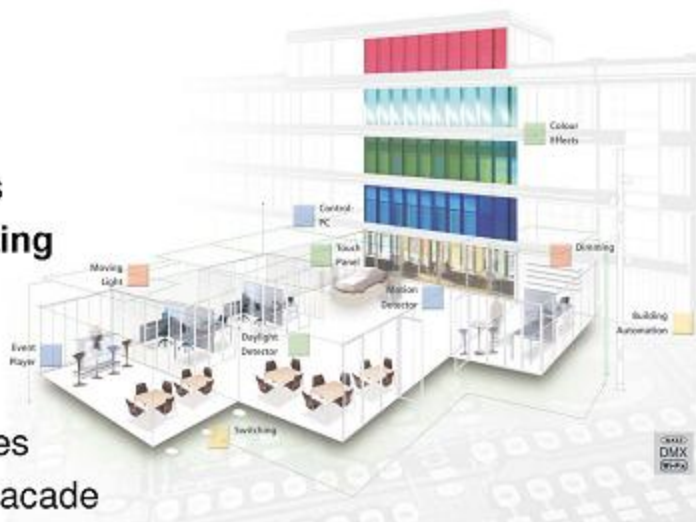
← airports | stations | parking →





Intelligent Lighting – for different applications

- **Energy efficient lighting**
 - Daylight control & presence control
- **Flexible lighting**
 - Multifunctional use of rooms and buildings
- **Ambience & therapy lighting**
 - Emotional lighting & colour control
- **Scenic lighting**
 - Events / stage / theatres
 - Sales / presentation / facade





The key – EUTRAC NetComposer (NCR)

→ Connection of:

- 2x 64 DALI lines for 128 DALI fixtures
- 2x 512 DMX channels for 1024 DMX/RDM channels
- 1x 64 DALI and 1x 512 DMX/RDM channels
- Wi-Fx wireless option

→ Administration of:

- 128 global groups
- 128 global scenes
- 32 sequences / 1 active

→ Each network:

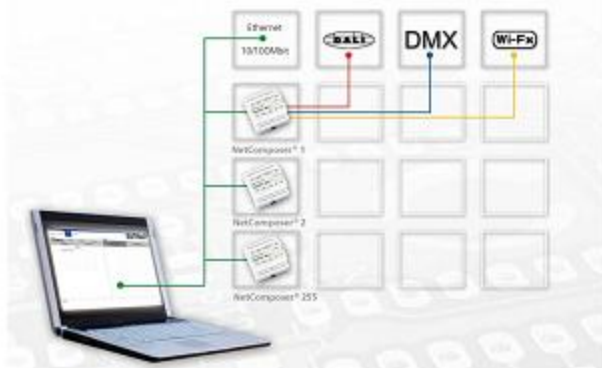
- Connection of up to 254 devices
- Possibility for up to approx. 32.000 fixtures





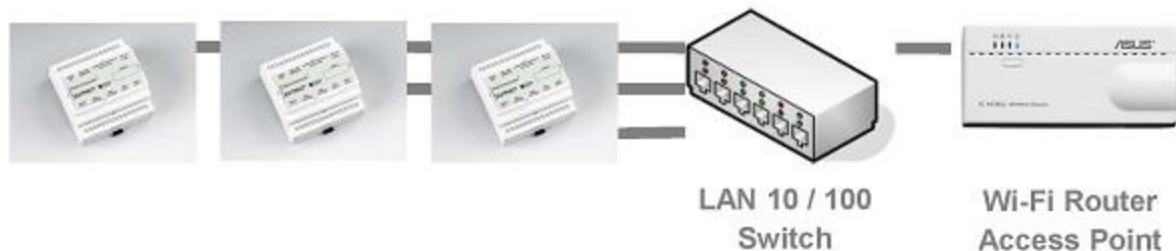
NetComposer communication

- **Ethernet UDP:** Network-connection over standard Ethernet IP, up to 254 NetComposer can be integrated and managed with a central PC
- **DALI:** „Digital Addressable Lighting Interface“ is the bus standard in lighting industry for easy use and operation through the electrical installer on site, 64 Devices each DALI line (max. 300 m)
- **DMX512 / RDM:** „Digital Multiplex Signal“ is the bus standard in event industry, robust cabling, fast and secure data transfer. Installation typical through the event technician. 512 Channels each line (max. 500 m)





NetComposer network structure





NetComposer software – one window

Composer Funktionen **Live** Edit 0..100% ? Intelligent Lighting

Geräte Gruppen

DALI A								DMX B								Wi-Fi																																															
Mischput								Probe DALI Fehler								Gruppentabelle								Szenentabelle																																							
1	2	3	4	5	6	7	8	9	10	11	12	13	14	15	16	17	18	19	20	21	22	23	24	25	26	27	28	29	30	31	32	33	34	35	36	37	38	39	40	41	42	43	44	45	46	47	48	49	50	51	52	53	54	55	56	57	58	59	60	61	62	63	64

**64 DALI fixtures or
512 DMX / RDM channels**

128 global or local groups

128 global or local scenes

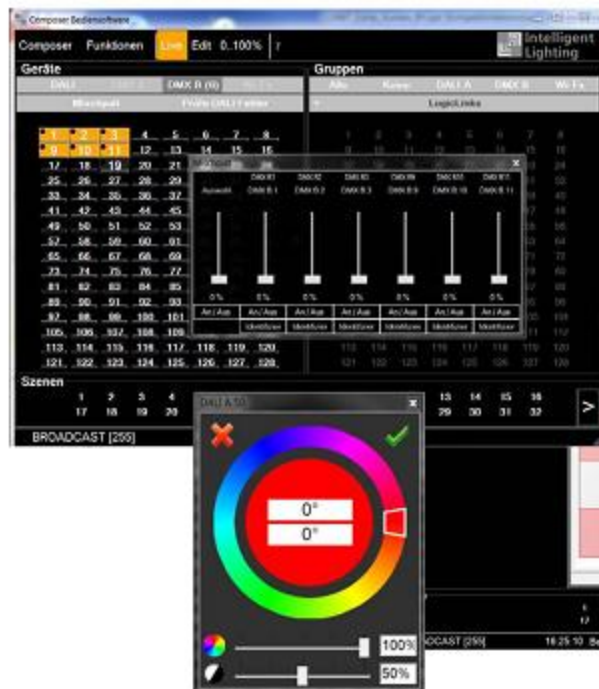
Szenen

1	2	3	4	5	6	7	8	9	10	11	12	13	14	15	16	17	18	19	20	21	22	23	24	25	26	27	28	29	30	31	32
---	---	---	---	---	---	---	---	---	----	----	----	----	----	----	----	----	----	----	----	----	----	----	----	----	----	----	----	----	----	----	----

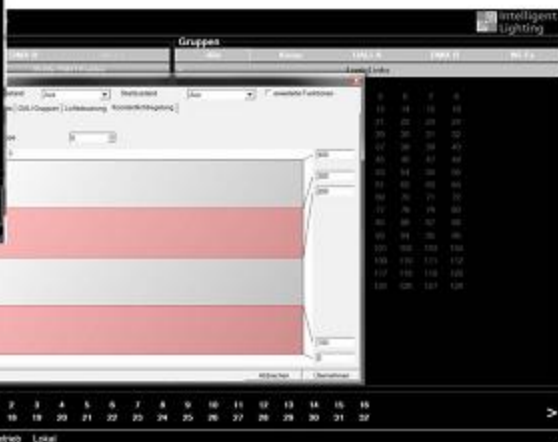
BROADCAST [255] 16:14:39 Betrieb Lokal



NetComposer software – tools



- Light level mixer
- Colour control
- Constant daylight control





NetComposer software – key facts

→ Software

- Manual addressing and operation, mixing desk (right mouse button)
- Time switching with ASTRO function (automatic summer / winter time shift)
- Graphic colour control operation, Graphic „Moving Light“ operation
- DALI colour control according DA 209 standard (1 address only)
- Day light control with graphic operation
- Environmental function by time schedule or TrackLinks integrated
- DMX RDM addressing, DMX Fading for all 1024 channels
- Automatic power down function
- Lamp failure request
- Customized OEM software (Logos/colours) on request
- Software is available in different languages

→ Handling

- „One Window“ – philosophy
- DALI - DMX – simultaneously mix in groups scenes
- Group- and scene table spread sheet incl. copy function
- General „mouseover“ clear text bubbles
- Current dim and colour settings visible



NetComposer – user interface

→ **Setting and managing**

→ Via PC – Ethernet network or WLAN

→ **Comfortable use**

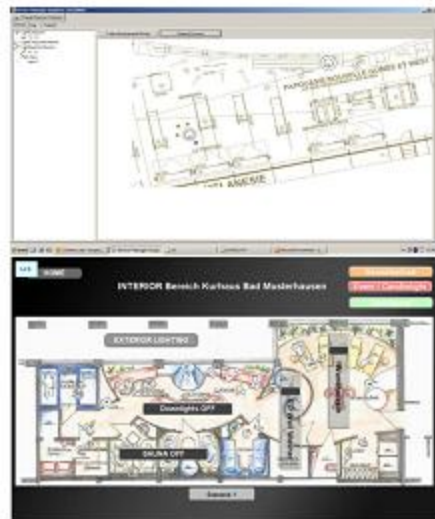
Switching, dimming, calling scenes and sequences

→ Standard push-button and switch

→ Automated functions (LogicLinks)

→ Visualisation via touch panel or screen
[provided by a partner company]

→ LightingTab App





The new LightingTab App



- For iPad 2/3, iPhone 4/4S, iPod touch, Win 7 / Win 8
 - Android application planned



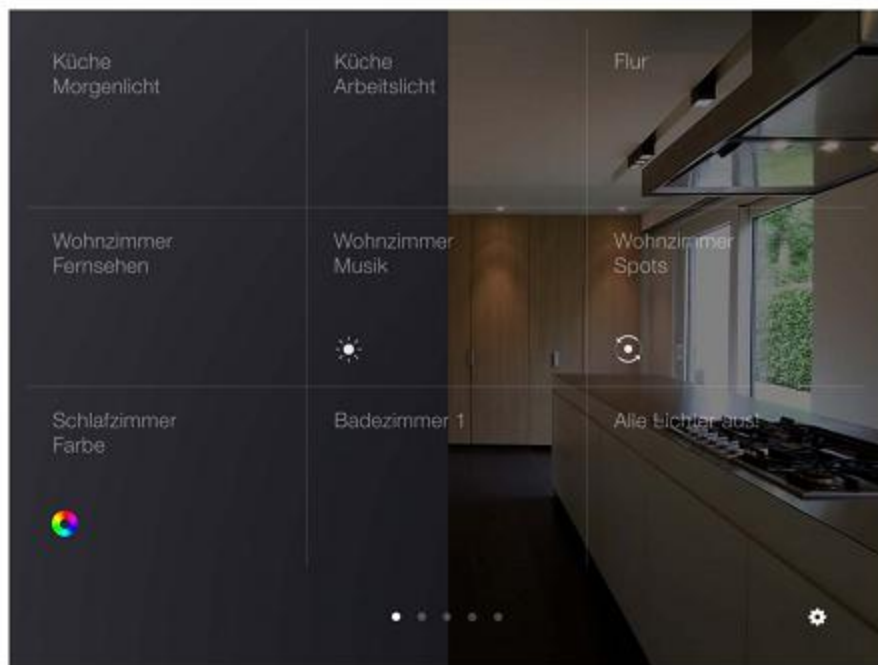
- Configuration at PC through NetComposer
 - All information are saved in NetComposer



- Functionality:
 - Single light fixture controlling, switching, dimming
 - Moving lights & colour control
 - Calling scenes
 - Start and stop sequences



User interface – customized background





User interface – dimming





User interface – colour control (iOS)





User interface – moving heads





Product offering

- **Lighting control**
 - Single room solution
 - Network solution
- **DALI and DMX devices for DIN rail or as pcb**
 - Various LED controller
 - Dim and switch devices
 - Motion and light sensors
 - TrackLinks for the connection of standard push buttons to DALI
- **Customized solution, recently completed:**
 - DMX dimmer 120V
 - LSS Light spectrum Sensor for museums (Quai Branly Paris)
 - Detects RGB, UV, lux, temperature humidity
 - Calculates the damage factor of the art-work
 - Lights are controlled accordingly to the measurements





Project – references extract

→	Project	Application	Central PC	NCR / Ballast
→	Paris, Branly	Museum, DALI, LSS	yes	5 / 600
→	Dresden, Albertinum	Museum, DALI, DR8	no	4 / 50
→	Rüsselsheim, Opelvillen	Museum, DALI, LMS	yes	2 / 250
→	Caputh, Gildehaus	Seminar centre, DALI	yes	2 / 100
→	Berlin, TU	Office, DALI, LMS	no	3 / 50
→	Berlin, Werkbund	Gallery, DALI	yes	1 / 100
→	Berlin, Selux, Foyer	Foyer, DALI	yes	2 / 150
→	Berlin, Booking.com	Call Centre, DALI, LMS	no	2 / 200
→	Berlin, Königstadt Carree	LED facade, DMX	LightingTab	11 / 312
→	München, Jugendkirche	Church, DALI, DMX	no	2 / 300
→	Duisburg, Industry	Industrial Park , DMX	yes	1 / 110
→	Rathenow, Industry	Office, DALI	no	2 / 200
→	Stuttgart, Fraunhofer	Office Testfield, DALI	no	1 / 100
→	Hennef, Bus station	Public Transport, DALI	yes	2 / 140
→	Wiesbaden, Delta	Car sales, DALI	yes	3 / 250
→	Wien, APCOA Parking	Garage , DALI	no	2 / 200
→	Aalborg, Harbour House	Shopping mall, DALI, LMS, EMS	no	1 / 100



Summary

→ **EUTRAC offers:**

- Lighting control and electronic products
- Competitive product range at high quality
- Wide product ranges with USP's
- High technical knowledge and experience
- Customer driven service
- Customized solutions
- Product innovations
- Long term partnership



EUTRAC®

EUTRAC Stromschienen GmbH

Tracks and adaptors



 **Intelligent
Lighting**

Light management & control



Thank you very much for your attention

www.intelligentlighting.de

www.eutrac.de